

ROTOCLAMP OUTSIDE XL ACTIVE

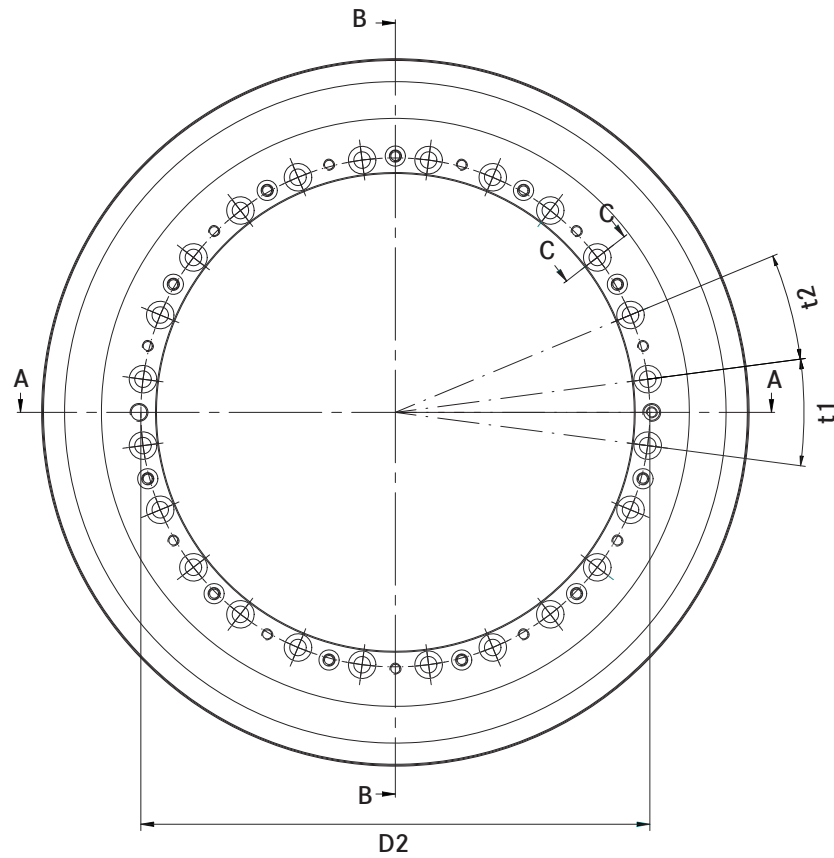


| Size | D1 opened rated pressure P _n = 0 bar | Required shaft diameter | D2 | D3 | B | E | F | n Number of fixing screws | a | t1 | t2 | Elastic holding torque P _n = 4 bar at 4 bar | Mass max. | Air requirement per stroke max. |
|----------------|---|-------------------------------|-------|------|------|-------|-------|---------------------------------------|------|-----|-----|--|--------------|--|
| Unit | [mm] | [mm] | [mm] | [mm] | [mm] | [mm] | [mm] | Quantity | [mm] | [°] | [°] | [Nm] | [kg] | [mL] |
| Tolerance | -0.04/-0.055 | +0.01/+0.03 | ± 0.1 | | +0.4 | | | | | | | | | |
| Roundness | 0.01 | 0.01 | | | | | | | | | | | | |
| Surface finish | R _a 0.8 μm | R _a 0.8 μm | | | | | | | | | | | | |
| RCO 520 XLA | 520 | 520 | 365 | 340 | 30 | 182.5 | 182.5 | 24xM10 | 8 | 15 | 15 | 3900 | 22 | 300 |

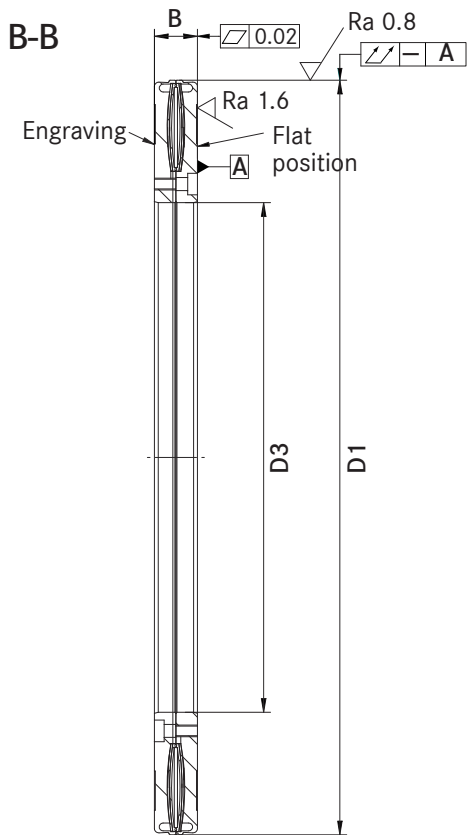
Technical data applies to RotoClamp Outside XL Active.

Holding torque for tandem version: Values factor 1.8. Subject to changes and errors, the respective written order confirmation applies.

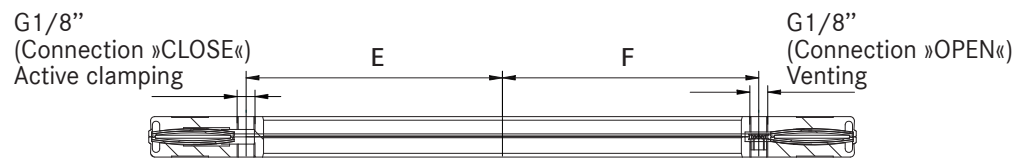
ROTOCLAMP OUTSIDE XL ACTIVE



Profile B-B



Profile A-A



Profile C-C

